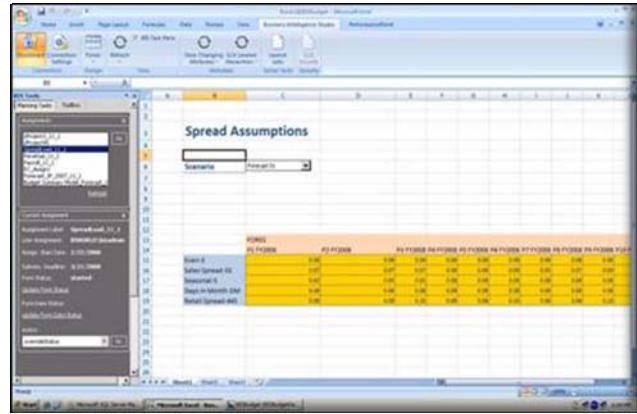




# Business Intelligence Studio For Microsoft Office PerformancePoint Server 2007

## What is Business Intelligence Studio?

Business Intelligence Studio (BIS) enables full utilization of all Microsoft Office PerformancePoint Server 2007 (PPS) features. It is a solution that accelerates implementation of PPS, enables end-user productivity and provides valuable budgeting/planning functionality to facilitate better Business Performance Management



## Why use Business Intelligence

BIS enhances your investment in PerformancePoint Server, to better serve your user community with user friendly financial applications.

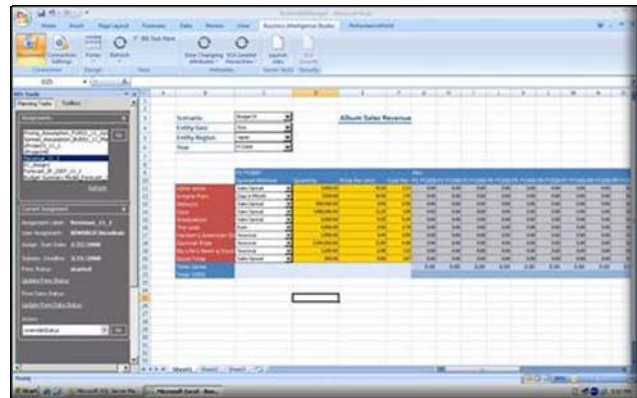
Run Time of Multi Model Matrix control with Custom Controls within the Matrix: Four slicers were added that allows the user to select a region and based on that selection, the slicer below will only display its sub regions (example: Region Slicer could Select United States, and the slicer dropdown below would show only the sub regions of the US.) There are two models in this Matrix: A Pricing Assumption Model and a Revenue Model. The user can select a spreading method, the quantity, cost and unit price. (Stored in the Assumption Model) and when submitted, a calculation can be run that will spread the values into the revenue model based on the spread type selected in the dropdown control.

## A few examples of how BIS can help your organization:

BIS enables you to combine data from several cubes (for example, employee salary per year in the user model with the salary increase percentage from the assumption model). This ensures an easy to use end-user environment, rather than having to juggle with multiple workbooks.

Let end-users add members on the fly (for example, If a department manager needs to add a new employee, this can be done easily and securely directly in the excel budget model versus having to go to the PPS console (Biz Modeler).

For Line Item detail (such as detailed travel expenses below the GL account level) you do not have to first add each line item as a dimension member in the data warehouse. Instead BIS will handle this automatically directly in Microsoft Excel, enabling dynamic input forms.



Design Time Control. This is used to create the intersections between the rows and columns. BIS allows you to intersect different Models so this allows you to select which column and row groups intersect each other and then select which Model we want to submit the data back to.

## Business Intelligence Studio Features and Benefits for your business:

**Form Designer/Report Writer:** Easy and powerful Excel- based form designer to create forms and reports. New forms can be inherited or cloned from existing forms for easy reuse. Advanced MDX wizard will create complex MDX for your form without having to know MDX. Rules can be run directly within the form.

**Parameterized Rules:** BIS can dramatically improve speed and scalability in the budget model because it can parameterize PPS business rules with the benefit of only having to recalculate the relevant section of the cube.

**Line Item Detail:** Update/create/ remove records from the transaction table, reference multiple measures within one model, read multiple models within a line item.

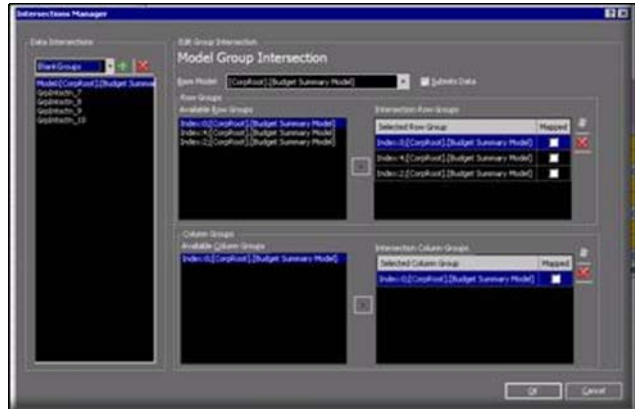
**Form Controls:** Drop down boxes, check boxes, short and long text boxes and linked drop downs, enables data entry with checks and controls, to ensures better data quality, smoother budgeting and forecasting processes which provides better business performance management in your organization.

**Multi-Model Forms:** Custom template-based controls can be assigned multiple times to one form and can be controlled from the slicer. It can submit to multiple models and scenarios without having to change from one Excel form to the other. In other words, multiple cubes can be linked to the same slicers.

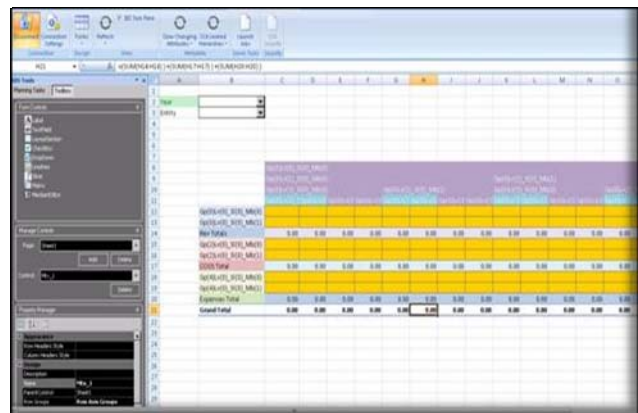
**Dimension Slicer:** Can control one or more dynamic matrix controls, slicer can have multiple dimension members and member set groups that can reference to each other to allow for filtering

**Simplified Dimension Maintenance:** End-users can create, add, and delete dimension members and related hierarchy maintenance as well as their attributes directly within the Excel add-in without having an administrator first add the member in the PPS Biz Modeler interface.

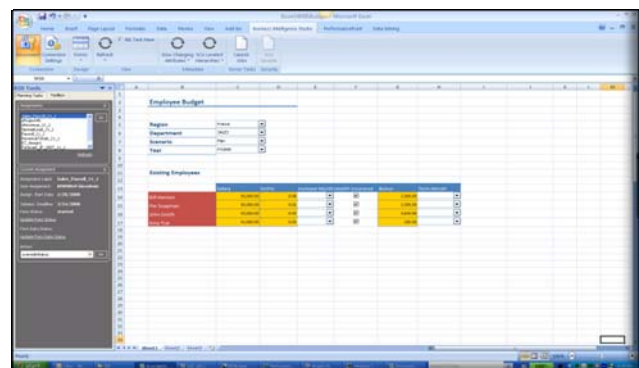
Hardware Requirement: Same as PerformancePoint Server 2007. but we recommend 64 bit.



Run Time Matrix enables power users to create Excel forms and reports.



The Design time viewer shows that two slicers were added to the form with a Matrix that contains several key BIS Features. The Matrix can be customized with Styles and Multiple Row Groups. Each row group can have a Calculation Row and finally a Grand Total Calculation added at the bottom of the matrix.



Business Intelligence Studio creates full, rich, robust form functionality enabling Employee Budget forms to be a snap.